

CERTIFIED LAND CORNER RECORDATION

DESCRIPTION OF CORNER EVIDENCE FOUND, AND ORIGINAL RECORD (If known)

LOCATION No monument found. A 1/2" dia. rebar, set by Wyoming PE&LS 558, bears S 74°43' W, 0.77 foot distant.
 1/4
 S.14 S.13 Corner position re-established by proportionate measurement.
 T.14N., R.64W. G.L.O. record - Granite boulder, 14" x 8" x 6" - 1871.
 6th P.M.

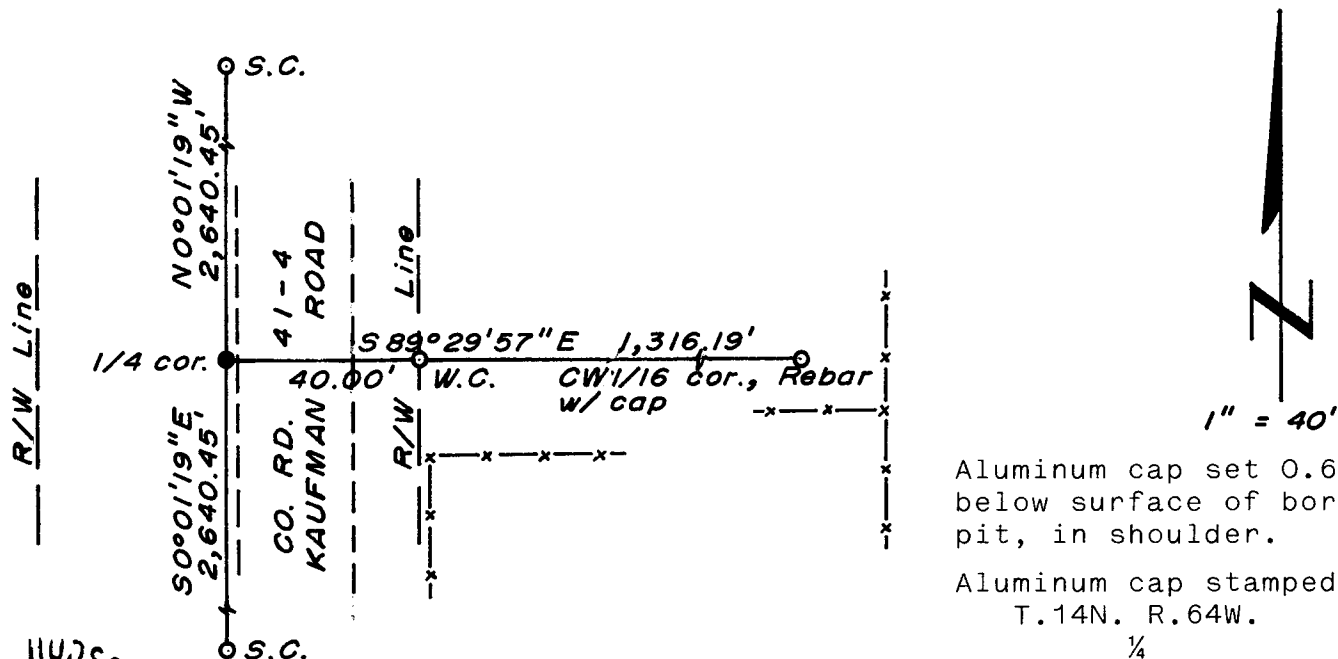
DESCRIPTION OF MONUMENT AND ACCESSORIES ESTABLISHED TO PERPETUATE THE ORIGINAL LOCATION OF THIS CORNER:

At the corner: Set a 5/8" dia. x 24" long rebar with 2" dia. aluminum cap.
 Accessories: Set a 5/8" dia. x 24" long rebar with aluminum cap; bears S 89°29'57" E, 40.00 feet distant; stamped W.C.

SKETCH, WITH COURSE AND DISTANCE TO ADJACENT CORNER IF DETERMINED IN THIS SURVEY.

(May Sketch or Paste Reproduction on Reverse Side.)

Basis of Bearing: By solar observation, one-half mile east of this corner.
 Distances based on measurements by electronic means.

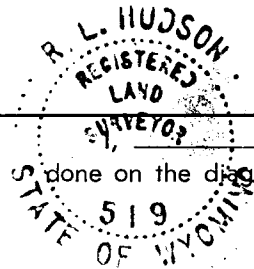


Aluminum cap set 0.6' below surface of borrow pit, in shoulder.

Aluminum cap stamped:
 T.14N. R.64W.

1/4
 S.14 S.13

LS 519 1979



R. L. Hudson certify that I have carefully performed ~~or reviewed~~ the work done on the diagrammed corner as reported on this recordation form and approve the same.

R. L. Hudson Wyoming L.S. No. 519
 Signature of Surveyor Registration No.

STATE OF WYOMING,
 Office of Clerk and Recorder,
 County of Tarasburg

534732

This "corner record" was filed for record on the 6 day of July, 1977, was noted on the cross-index plat and is assigned page No. _____, in book No. _____.

Janet C. Whitehead
 County Official

Cross Index No. <u>L-21</u>	T. _____	R. _____	Mer. _____
	T. <u>14</u>	R. <u>64</u>	Mer. _____
	T. _____	R. _____	Mer. _____
	T. _____	R. _____	Mer. _____
	T. _____	R. _____	Mer. _____
	T. _____	R. _____	Mer. _____